



Industrial Hygiene • Air Quality • Lead & Asbestos • Training • Health & Safety

## LIMITED ASBESTOS INSPECTION REPORT

Conducted at:

SAVANNAH ELEMENTARY SCHOOL  
PAINTING PROJECT  
3720 RIO HONDO AVENUE  
ROSEMEAD, CALIFORNIA 91770

Prepared for:


MR. HAROLD SULLINS  
ASSISTANT SUPERINTENDENT  
ROSEMEAD SCHOOL DISTRICT  
3907 ROSEMEAD BOULEVARD, SUITE 220  
ROSEMEAD, CALIFORNIA 91770

Prepared by:

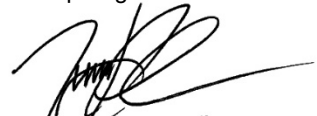
EXECUTIVE ENVIRONMENTAL  
310 EAST FOOTHILL BOULEVARD, SUITE 200  
ARCADIA, CALIFORNIA 91006

Project Number EE 20-Z0046-0135  
February 9, 2021

Report assembled by:

  
Yesenia G. Galeana  
Technical Report Writer  
Executive Environmental

Report generated/reviewed by:

  
Tim Galeana, CLP # 3732  
Senior Project Manager  
Executive Environmental

# TABLE OF CONTENTS

- I. EXECUTIVE SUMMARY
- II. SAMPLING METHODOLOGY
- III. SAMPLE ANALYSIS
- IV. FINDINGS
- V. CONCLUSIONS/RECOMMENDATIONS
- VI. DISCLAIMER/REPORT LIMITATIONS

## APPENDICES

APPENDIX A – LABORATORY ANALYSIS REPORT

APPENDIX B – SAMPLE LOCATIONS DRAWINGS

APPENDIX C – STAFF CERTIFICATION

## **LIMITED ASBESTOS INSPECTION REPORT**

**Project Number:** EE 20-Z0046-0135

**Client:** Rosemead School District  
3907 Rosemead Boulevard, Suite 220  
Rosemead, California 91770

**Site Location:** Savannah Elementary School  
Painting Project  
3720 Rio Hondo Avenue  
Rosemead, California 91770

**Site Use:** School Property

**Contact Person:** Mr. Harold Sullins  
Assistant Superintendent  
Phone: (626) 312-2900

**Inspection Date:** December 22 and 29, 2020

**Inspected By:** Mr. Rhys Kuzmic  
Certified Asbestos Consultant, # 09-4586

**Report Assembled By:** Ms. Yesenia G. Galeana  
Technical Report Writer

**Report Generated/Reviewed By:** Mr. Tim Galeana  
Certified Asbestos Consultant, # 98-2470

---

### **I. EXECUTIVE SUMMARY**

Executive Environmental (EE) provided the services of a Certified Asbestos Consultant to conduct a limited asbestos inspection of the permanent buildings, portables and covered walkways at Savannah Elementary School located at 3720 Rio Hondo Avenue, Rosemead, California. The inspection was conducted as a precursor to the upcoming exterior painting project. Materials suspected of containing asbestos were sampled and analyzed for the presence of asbestos. No Asbestos-Containing Materials (ACM) were identified during this inspection. *This is considered to be a limited inspection. Inspection was limited to exterior materials anticipated to be impacted by the exterior painting project.*

### **II. SAMPLING METHODOLOGY**

A visual inspection of the exterior of the permanent buildings, portables and covered walkways at Savannah Elementary School was conducted prior to the collection of any bulk samples. The visual inspection was conducted to identify and record the location and condition of the materials to be sampled. Following the visual inspection, bulk material samples of the identified suspect asbestos-containing building materials were

collected. The materials were categorized into homogeneous groupings, and each sample was assigned a unique sample number and placed into a sealed container.

Upon completion of the bulk sample collection, a chain of custody was prepared and the samples were delivered to the laboratory for analysis. AmeriSci of Carson, CA, analyzed the samples using Polarized Light Microscopy (PLM). AmeriSci is an accredited participant in the National Voluntary Laboratory Accreditation Program (NVLAP), No. 200346-0. The principles described in the current Environmental Protection Agency (EPA) 600 method were used in the preparation and analysis of the bulk samples.

*Note: Inaccessible suspect asbestos materials may be located within sealed ceilings, walls, or floors; or within wall cavities, interstitials, shafts, etc. Suspect asbestos materials located in these areas must be sampled prior to any activities that might cause them to be disturbed.*

### **III. SAMPLE ANALYSIS**

Forty-four (44) samples were collected during this inspection. The laboratory analysis results are identified in the following table. Materials determined not to contain asbestos are listed as "No Asbestos Detected" (NAD).

Any material found to contain more than 1% of a known asbestos substance is considered to be an asbestos-containing material (ACM). Materials falling within this category are controlled and must be handled in accordance with the California Occupational Safety & Health Administration (Cal/OSHA), EPA, and South Coast Air Quality Management District (SCAQMD) regulations.

In addition, materials which are characterized as non-ACM by EPA or other local regulatory agencies may fall within the regulatory standards of Cal/OSHA, which further regulates any materials found to contain more than 1/10 of 1%, but 1% or less, of a known asbestos substance as asbestos-containing construction materials (ACCMs). Impacting or handling ACCMs requires special employer registration, documentation, training, and personal protective equipment. When a material is to be impacted, the National Emission Standards for Hazardous Air Pollutants (NESHAPs) regulations require further testing for materials that fall within this category.

The PLM analytical protocol requires each layer of the sample to be analyzed separately. The quantity of analyses will vary based on the number of layers in a sample and whether a "positive stop" is employed. When one sample of a homogeneous area is positive, the remainder of the samples need not be analyzed because the entire homogeneous area must be considered positive.

**Sampling results begin on the next page.  
The remainder of this page is blank.**

## POLARIZED LIGHT MICROSCOPY (PLM) ANALYSIS DATA

Savannah Elementary School  
3720 Rio Hondo Avenue  
Rosemead, California 91770

Homogeneous Material #	Material Description	Material Location	Estimated Quantity	Condition <sup>A</sup>	Type <sup>B</sup>	Friable	Percent Damaged	Sample Number	Sample Location	Analytical Results
Building A (MPR) <sup>C</sup>										
1	Stucco	Throughout exterior walls, overhangs, south breezeway walls and ceilings connected to Building F	4,000 Square Feet	G	Surf.	No	<1	2012220135RK-01	West wall	NAD <sup>D</sup>
								2012220135RK-02	North wall	NAD
								2012220135RK-03	East wall	NAD
								2012220135RK-04	Breezeway, south wall	NAD
								2012220135RK-05	Breezeway, northwest ceiling	<1% chrysotile <sup>E</sup>
										1000-Pt. Ct.: <0.1% chrysotile
Building B (Rooms 6 thru 9) <sup>F</sup>										
2	Stucco	Throughout exterior walls	3,400 Square Feet	G	Surf.	No	<1	2012220135RK-06	West wall	NAD
								2012220135RK-07	South wall, west	NAD
								2012220135RK-08	South wall, east	NAD
								2012220135RK-09	East wall	NAD
								2012220135RK-10	North wall	NAD

*Note: This table must be used in conjunction with the entire report. This document is not to be used for contract bidding and is intended to be used to identify asbestos-containing materials and their locations only.*

<sup>A</sup> G = Good; D = Damaged; SD = Severely Damaged

<sup>B</sup> Misc. = Miscellaneous; Surf. = Surfacing; TSI = Thermal System Insulation

<sup>C</sup> NOTE: 1) No window putty. 2) Cinderblock exterior select walls.

<sup>D</sup> NAD = No Asbestos Detected.

<sup>E</sup> Sample 5 had a result of less than 1% chrysotile via PLM analysis were further analyzed via the 1000-point count method. The analysis by 1000-point count analysis revealed that under Cal/OSHA regulations the stucco is a non-regulated material.

<sup>F</sup> NOTE: 1) No window putty.

# POLARIZED LIGHT MICROSCOPY (PLM) ANALYSIS DATA

Savannah Elementary School  
3720 Rio Hondo Avenue  
Rosemead, California 91770

Homogeneous Material #	Material Description	Material Location	Estimated Quantity	Condition <sup>G</sup>	Type <sup>H</sup>	Friable	Percent Damaged	Sample Number	Sample Location	Analytical Results
Building C (Classrooms 10 thru 14) <sup>I</sup>										
3	Stucco	Throughout exterior walls	3,000 Square Feet	G	Surf.	No	<1	2012220135RK-11	West wall	NAD <sup>J</sup>
								2012220135RK-12	South wall, west	NAD
								2012220135RK-13	South wall, east	<1% chrysotile <sup>K</sup>
										1000-Pt. Ct.: <0.1% chrysotile
								2012220135RK-14	East wall	NAD
								2012220135RK-15	North wall	NAD
Building D (Classroom 2) <sup>L</sup>										
4	Stucco	Throughout exterior walls	1,500 Square Feet	G	Surf.	No	<1	2012220135RK-16	North wall, west	NAD
								2012220135RK-17	North wall, east	NAD
								2012220135RK-18	East wall	NAD
								2012220135RK-19	South wall	NAD
								2012220135RK-20	West wall	NAD

*Note: This table must be used in conjunction with the entire report. This document is not to be used for contract bidding and is intended to be used to identify asbestos-containing materials and their locations only.*

<sup>G</sup> G = Good; D = Damaged; SD = Severely Damaged

<sup>H</sup> Misc. = Miscellaneous; Surf. = Surfacing; TSI = Thermal System Insulation

<sup>I</sup> NOTE: 1) No window putty.

<sup>J</sup> NAD = No Asbestos Detected.

<sup>K</sup> Sample 13 had a result of less than 1% chrysotile via PLM analysis were further analyzed via the 1000-point count method. The analysis by 1000-point count analysis revealed that under Cal/OSHA regulations the stucco is a non-regulated material.

<sup>L</sup> NOTE: 1) No window putty.

# **POLARIZED LIGHT MICROSCOPY (PLM) ANALYSIS DATA**

Savannah Elementary School  
3720 Rio Hondo Avenue  
Rosemead, California 91770

Homogeneous Material #	Material Description	Material Location	Estimated Quantity	Condition <sup>M</sup>	Type <sup>N</sup>	Friable	Percent Damaged	Sample Number	Sample Location	Analytical Results
<b>Building E (Classrooms 3 thru 5)<sup>O</sup></b>										
4	Stucco	Throughout exterior walls and Breezeway walls and ceilings	4,300 Square Feet	G	Surf.	No	<1	2012220135RK-21	North wall	NAD <sup>P</sup>
								2012220135RK-22	East wall	<1% chrysotile <sup>Q</sup>
								2012220135RK-23	South wall	1000-Pt. Ct.: <0.1% chrysotile
								2012220135RK-24	West wall	NAD
								2012220135RK-25	Breezeway, ceiling south	<1% chrysotile
										1000-Pt. Ct.: <0.1% chrysotile

*Note: This table must be used in conjunction with the entire report. This document is not to be used for contract bidding and is intended to be used to identify asbestos-containing materials and their locations only.*

**The remainder of this page is blank.**

<sup>M</sup> G = Good; D = Damaged; SD = Severely Damaged

<sup>N</sup> Misc. = Miscellaneous; Surf. = Surfacing; TSI = Thermal System Insulation

<sup>O</sup> NOTE: 1) No window putty.

<sup>P</sup> NAD = No Asbestos Detected.

<sup>Q</sup> Samples 22 and 25 had a result of less than 1% chrysotile via PLM analysis were further analyzed via the 1000-point count method. The analysis by 1000-point count analysis revealed that under Cal/OSHA regulations the stucco is a non-regulated material.

# **POLARIZED LIGHT MICROSCOPY (PLM) ANALYSIS DATA**

Savannah Elementary School  
3720 Rio Hondo Avenue  
Rosemead, California 91770

Homogeneous Material #	Material Description	Material Location	Estimated Quantity	Condition <sup>R</sup>	Type <sup>S</sup>	Friable	Percent Damaged	Sample Number	Sample Location	Analytical Results
Building F (Administration/Library) <sup>T</sup>										
5	Stucco	Throughout exterior walls, Breezeway wall and Overhangs	2,200 Square Feet	G	Surf.	No	<1	2012220135RK-26	South wall	<1% chrysotile <sup>U</sup> 1000-Pt. Ct.: <0.1% chrysotile
								2012220135RK-27	East wall	NAD <sup>V</sup>
								2012220135RK-28	Overhang, ceiling northwest	<1% chrysotile
										1000-Pt. Ct.: <0.1% chrysotile
								2012220135RK-29	Breezeway, north wall	<1% chrysotile
										1000-Pt. Ct.: <0.1% chrysotile
								2012220135RK-30	Overhang, ceiling southwest	<1% chrysotile
										1000-Pt. Ct.: <0.1% chrysotile
Portables <sup>W</sup>										
No suspect asbestos-containing materials were identified on the exterior walls of Building G (Portable 1), Building J (Portables 15 thru 19), Building K (Portables 20, 21 and Restroom), Building L (Portables 22 thru 29)										

*Note: This table must be used in conjunction with the entire report. This document is not to be used for contract bidding and is intended to be used to identify asbestos-containing materials and their locations only.*

<sup>R</sup> G = Good; D = Damaged; SD = Severely Damaged

<sup>S</sup> Misc. = Miscellaneous; Surf. = Surfacing; TSI = Thermal System Insulation

<sup>T</sup> NOTE: 1) No window putty. 2) Cinderblock exterior select walls

<sup>U</sup> Samples 26, 28 thru 30 had a result of less than 1% chrysotile via PLM analysis were further analyzed via the 1000-point count method. The analysis by 1000-point count analysis revealed that under Cal/OSHA regulations the stucco is a non-regulated material.

<sup>V</sup> NAD = No Asbestos Detected.

<sup>W</sup> NOTE: 1) All Portables have exterior wood walls and no window putty. 2) Building G (Portable 1) exterior wood panel was removed.



# **POLARIZED LIGHT MICROSCOPY (PLM) ANALYSIS DATA**

Savannah Elementary School  
3720 Rio Hondo Avenue  
Rosemead, California 91770

Homogeneous Material #	Material Description	Material Location	Estimated Quantity	Condition <sup>x</sup>	Type <sup>y</sup>	Friable	Percent Damaged	Sample Number	Sample Location	Analytical Results
<b>Campus</b>										
6	Asphalt paving	West Parking Lot	10,000 Square Feet	G	Misc.	No	<1	2012290135RK-31	North	NAD <sup>z</sup>
								2012290135RK-32	Center	NAD
								2012290135RK-33	Southwest	NAD
7	Asphalt paving	Northeast Parking Lot	10,500 Square Feet	G	Misc.	No	<1	2012290135RK-34	North	NAD
								2012290135RK-35	East	NAD
								2012290135RK-36	South	NAD
8	Asphalt paving	Playground	36,000 Square Feet	G	Misc.	No	<1	2012290135RK-37	Northeast	NAD
								2012290135RK-38	East at Volleyball court	NAD
								2012290135RK-39	Center	NAD
								2012290135RK-40	West	NAD
								2012290135RK-41	South near Storage Shed	NAD
9	Asphalt paving	Handball Court	3,400 Square Feet	G	Misc.	No	<1	2012290135RK-42	North	NAD
								2012290135RK-43	Center	NAD
								2012290135RK-44	South	NAD

*Note: This table must be used in conjunction with the entire report. This document is not to be used for contract bidding and is intended to be used to identify asbestos-containing materials and their locations only .*

**The remainder of this page is blank.**

<sup>x</sup> G = Good; D = Damaged; SD = Severely Damaged

<sup>y</sup> Misc. = Miscellaneous; Surf. = Surfacing; TSI = Thermal System Insulation

<sup>z</sup> NAD = No Asbestos Detected.

#### **IV. FINDINGS**

EE conducted a limited asbestos inspection of the permanent buildings, portables and covered walkways at Savannah Elementary School located at 3720 Rio Hondo Avenue, Rosemead, California.

Nine (9) homogeneous material groups were identified during the visual property inspection. Forty-four (44) samples of suspect asbestos-containing materials were collected and delivered to AmeriSci of Carson, CA for analysis. The homogeneous area and sampling results are listed on the table in Section III.

The analytical data revealed that the sampled materials do not contain asbestos.

#### **V. CONCLUSIONS/RECOMMENDATIONS**

No asbestos-containing materials were identified during this inspection. Activities involving the inspected materials may proceed as normal construction actions. If suspect asbestos materials that were not sampled are to be disturbed, additional sampling will be required.

If you have any questions, please call Mr. Tim Galeana at 626-441-7050. We are glad we could be of service to you.

#### **VI. DISCLAIMER/REPORT LIMITATIONS**

All reports and recommendations are based on conditions and practices observed and information made available to Executive Environmental (EE) by the client and the designated sites/facilities on the days sampling was conducted. This report does not purport to set forth all hazards, nor to indicate that other hazards do not exist. No responsibility is assumed by EE for the control or correction of conditions or practices existing at the facilities, or at any other premises surveyed by EE, for and on the behalf of the client. Services provided by EE shall be governed by the standard of practice for professional services measured at the time those services are rendered.

All information contained in this report is proprietary and limited to the scope of services, parameters of the analytical methods used and the conditions present at the time of this inspection. Any references to quantities are considered estimates and are not to be construed as actual.

## **APPENDIX A – LABORATORY ANALYSIS REPORT**



Please Reply To:

**AmeriSci Los Angeles**

24416 S. Main Street, Ste 308

Carson, California 90745

TEL: (310) 834-4868 • FAX: (310) 834-4772

**FACSIMILE TELECOPY TRANSMISSION**

**To:** Yesenia Galeana  
Executive Environmental Services Corporation

**Fax #:**

**Email:** info@execenv.com, ygaleana@execenv.com

**From:** Dennis Liu  
**AmeriSci Job #:** 920121642  
**Subject:** PLM 5 day Results  
**Client Project:** 20-Z0046-0135; Building A  
(MPR), Building B (Rooms 6-9),  
Building C (Rooms 10-1)

**Date:** Monday, January 4, 2021

**Time:** 13:14:53

**Comments:**

**Number of Pages:**

13  
(including cover sheet)

CONFIDENTIALITY NOTICE: Unless otherwise indicated, the information contained in this communication is confidential information intended for use of the individual named above. If the reader of this communication is not the intended recipient, you are hereby notified that any dissemination, distribution or copying of this communication is prohibited. If you have received this communication in error, please immediately notify the sender by telephone and return the original message to the above address via the US Postal Service at our expense. Samples are disposed of in 60 days or unless otherwise instructed by the protocol or special instructions in writing. Thank you.

**Certified Analysis**

**Service 24 Hours A Day • 7 Days A Week**

**Competitive Prices**

visit our web site - [www.amerisci.com](http://www.amerisci.com)

**Boston • Los Angeles • New York • Richmond**

**AmeriSci Los Angeles**

24416 S. Main Street, Ste 308

Carson, California 90745

TEL: (310) 834-4868 • FAX: (310) 834-4772

**PLM Bulk Asbestos Report**

Executive Environmental Services Corpo **Date Received** 12/28/20 **AmeriSci Job #** 920121642  
Attn: Yesenia Galeana **Date Examined** 01/04/21 **P.O. #**  
310 East Foothill Blvd. **Page** 1 **of** 6  
Suite 200  
Arcadia, CA 91006 **RE: 20-Z0046-0135; Building A (MPR), Building B (Rooms 6-9),**  
**Building C (Rooms 10-14), Building D (Room 2), Building E**  
**(Rooms 3-5), F Admin, Library (Media Center)**

Client No. / HGA	Lab No.	Asbestos Present	Total % Asbestos
2012220135RK-01 <b>Location:</b> Exterior, West Wall / Stucco / T-O Exterior Walls, Overhangs And South Breezeway Walls & Ceiling Connected To Bldg F <b>Analyst Description:</b> Beige/Grey, Heterogeneous, Non-Fibrous, Cementitious, Stucco <b>Asbestos Types:</b> <b>Other Material:</b> Non-fibrous 100 %	920121642-01	No	NAD (by CVES) by Dennis Liu on 01/04/21
2012220135RK-02 <b>Location:</b> Exterior, North Wall / Stucco <b>Analyst Description:</b> Grey, Heterogeneous, Non-Fibrous, Cementitious, Stucco <b>Asbestos Types:</b> <b>Other Material:</b> Non-fibrous 100 %	920121642-02	No	NAD (by CVES) by Dennis Liu on 01/04/21
2012220135RK-03 <b>Location:</b> Exterior, East Wall / Stucco <b>Analyst Description:</b> Grey, Heterogeneous, Non-Fibrous, Cementitious, Stucco <b>Asbestos Types:</b> <b>Other Material:</b> Non-fibrous 100 %	920121642-03	No	NAD (by CVES) by Dennis Liu on 01/04/21
2012220135RK-04 <b>Location:</b> Exterior, South Wall (In Breezeway) / Stucco <b>Analyst Description:</b> Grey, Heterogeneous, Non-Fibrous, Cementitious, Stucco <b>Asbestos Types:</b> <b>Other Material:</b> Non-fibrous 100 %	920121642-04	No	NAD (by CVES) by Dennis Liu on 01/04/21
2012220135RK-05 <b>Location:</b> Breezeway Ceiling, NW / Stucco <b>Analyst Description:</b> Grey, Heterogeneous, Non-Fibrous, Cementitious, Stucco <b>Asbestos Types:</b> Chrysotile <1. % <b>Other Material:</b> Non-fibrous 100 %	920121642-05	Yes	Trace (<1 %) (by CVES) by Dennis Liu on 01/04/21

Client Name: Executive Environmental Services Corporation

**PLM Bulk Asbestos Report**

20-Z0046-0135; Building A (MPR), Building B (Rooms 6-9),  
 Building C (Rooms 10-14), Building D (Room 2), Building E  
 (Rooms 3-5), F Admin, Library (Media Center)

Client No. / HGA	Lab No.	Asbestos Present	Total % Asbestos
2012220135RK-06	920121642-06	No	NAD
Location: Exterior, West Wall / Exterior Stucco / T-O Exterior Walls			(by CVES) by Dennis Liu on 01/04/21
Analyst Description: Grey, Heterogeneous, Non-Fibrous, Cementitious, Stucco			
Asbestos Types:			
Other Material: Non-fibrous 100 %			
2012220135RK-07	920121642-07	No	NAD
Location: Exterior, South Wall - West / Exterior Stucco			(by CVES) by Dennis Liu on 01/04/21
Analyst Description: Grey, Heterogeneous, Non-Fibrous, Cementitious, Stucco			
Asbestos Types:			
Other Material: Non-fibrous 100 %			
2012220135RK-08	920121642-08	No	NAD
Location: Exterior, South Wall - East / Exterior Stucco			(by CVES) by Dennis Liu on 01/04/21
Analyst Description: Beige/Grey, Heterogeneous, Non-Fibrous, Cementitious, Stucco			
Asbestos Types:			
Other Material: Non-fibrous 100 %			
2012220135RK-09	920121642-09	No	NAD
Location: Exterior, East Wall / Exterior Stucco			(by CVES) by Dennis Liu on 01/04/21
Analyst Description: Grey, Heterogeneous, Non-Fibrous, Cementitious, Stucco			
Asbestos Types:			
Other Material: Non-fibrous 100 %			
2012220135RK-10	920121642-10	No	NAD
Location: Exterior, North Wall / Exterior Stucco			(by CVES) by Dennis Liu on 01/04/21
Analyst Description: Grey, Heterogeneous, Non-Fibrous, Cementitious, Stucco			
Asbestos Types:			
Other Material: Non-fibrous 100 %			
2012220135RK-11	920121642-11	No	NAD
Location: Exterior, West Wall / Exterior Stucco / T-O Exterior Walls			(by CVES) by Dennis Liu on 01/04/21
Analyst Description: Grey, Heterogeneous, Non-Fibrous, Cementitious, Stucco			
Asbestos Types:			
Other Material: Non-fibrous 100 %			

Client Name: Executive Environmental Services Corporation

**PLM Bulk Asbestos Report**

20-Z0046-0135; Building A (MPR), Building B (Rooms 6-9),  
 Building C (Rooms 10-14), Building D (Room 2), Building E  
 (Rooms 3-5), F Admin, Library (Media Center)

Client No. / HGA	Lab No.	Asbestos Present	Total % Asbestos
2012220135RK-12	920121642-12	No	NAD
Location: Exterior, South Wall - West / Exterior Stucco			(by CVES) by Dennis Liu on 01/04/21
Analyst Description: Grey, Heterogeneous, Non-Fibrous, Cementitious, Stucco			
Asbestos Types:			
Other Material: Non-fibrous 100 %			
2012220135RK-13	920121642-13	Yes	Trace (<1 %)
Location: Exterior, South Wall - East / Exterior Stucco			(by CVES) by Dennis Liu on 01/04/21
Analyst Description: Grey/Tan, Heterogeneous, Non-Fibrous, Cementitious, Stucco			
Asbestos Types: Chrysotile <1. %			
Other Material: Non-fibrous 100 %			
2012220135RK-14	920121642-14	No	NAD
Location: Exterior, East Wall / Exterior Stucco			(by CVES) by Dennis Liu on 01/04/21
Analyst Description: Grey, Heterogeneous, Non-Fibrous, Cementitious, Stucco			
Asbestos Types:			
Other Material: Non-fibrous 100 %			
2012220135RK-15	920121642-15	No	NAD
Location: Exterior, North Wall / Exterior Stucco			(by CVES) by Dennis Liu on 01/04/21
Analyst Description: Grey, Heterogeneous, Non-Fibrous, Cementitious, Stucco			
Asbestos Types:			
Other Material: Non-fibrous 100 %			
2012220135RK-16	920121642-16	No	NAD
Location: Exterior, North Wall - West / Exterior Stucco / T-O Exterior Walls			(by CVES) by Dennis Liu on 01/04/21
Analyst Description: Beige/Grey, Heterogeneous, Non-Fibrous, Cementitious, Stucco			
Asbestos Types:			
Other Material: Non-fibrous 100 %			
2012220135RK-17	920121642-17	No	NAD
Location: Exterior, North Wall - East / Exterior Stucco			(by CVES) by Dennis Liu on 01/04/21
Analyst Description: Grey, Heterogeneous, Non-Fibrous, Cementitious, Stucco			
Asbestos Types:			
Other Material: Non-fibrous 100 %			

Client Name: Executive Environmental Services Corporation

**PLM Bulk Asbestos Report**

20-Z0046-0135; Building A (MPR), Building B (Rooms 6-9),  
 Building C (Rooms 10-14), Building D (Room 2), Building E  
 (Rooms 3-5), F Admin, Library (Media Center)

Client No. / HGA	Lab No.	Asbestos Present	Total % Asbestos
2012220135RK-18 Location: Exterior, East Wall / Exterior Stucco  Analyst Description: Grey, Heterogeneous, Non-Fibrous, Cementitious, Stucco Asbestos Types: Other Material: Non-fibrous 100 %	920121642-18	No	NAD (by CVES) by Dennis Liu on 01/04/21
2012220135RK-19 Location: Exterior, South Wall / Exterior Stucco  Analyst Description: Grey, Heterogeneous, Non-Fibrous, Cementitious, Stucco Asbestos Types: Other Material: Non-fibrous 100 %	920121642-19	No	NAD (by CVES) by Dennis Liu on 01/04/21
2012220135RK-20 Location: Exterior, West Wall / Exterior Stucco  Analyst Description: Grey, Heterogeneous, Non-Fibrous, Cementitious, Stucco Asbestos Types: Other Material: Non-fibrous 100 %	920121642-20	No	NAD (by CVES) by Dennis Liu on 01/04/21
2012220135RK-21 Location: Exterior, North Wall / Stucco / T-O Exterior Walls And Breezeway Walls And Ceiling  Analyst Description: Grey, Heterogeneous, Non-Fibrous, Cementitious, Stucco Asbestos Types: Other Material: Non-fibrous 100 %	920121642-21	No	NAD (by CVES) by Dennis Liu on 01/04/21
2012220135RK-22 Location: Exterior, East Wall / Stucco  Analyst Description: Beige/Grey, Heterogeneous, Non-Fibrous, Cementitious, Stucco Asbestos Types: Chrysotile <1. % Other Material: Non-fibrous 100 %	920121642-22	Yes	Trace (<1 %) (by CVES) by Dennis Liu on 01/04/21
2012220135RK-23 Location: Exterior, South Wall / Stucco  Analyst Description: Beige/Grey, Heterogeneous, Non-Fibrous, Cementitious, Stucco Asbestos Types: Other Material: Non-fibrous 100 %	920121642-23	No	NAD (by CVES) by Dennis Liu on 01/04/21



Client Name: Executive Environmental Services Corporation

**PLM Bulk Asbestos Report**

20-Z0046-0135; Building A (MPR), Building B (Rooms 6-9),  
Building C (Rooms 10-14), Building D (Room 2), Building E  
(Rooms 3-5), F Admin, Library (Media Center)

Client No. / HGA	Lab No.	Asbestos Present	Total % Asbestos
2012220135RK-24 Location: Exterior, West Wall / Stucco  Analyst Description: Beige/Grey, Heterogeneous, Non-Fibrous, Cementitious, Stucco Asbestos Types: Other Material: Non-fibrous 100 %	920121642-24	No	NAD (by CVES) by Dennis Liu on 01/04/21
2012220135RK-25 Location: Breezeway, South Ceiling / Stucco  Analyst Description: Grey, Heterogeneous, Non-Fibrous, Cementitious, Stucco Asbestos Types: Chrysotile <1. % Other Material: Non-fibrous 100 %	920121642-25	Yes	Trace (<1 %) (by CVES) by Dennis Liu on 01/04/21
2012220135RK-26 Location: Exterior, North Wall / Stucco / T-O Exterior Walls, Breezeway Wall And Overhang  Analyst Description: Grey/Tan, Heterogeneous, Non-Fibrous, Cementitious, Stucco Asbestos Types: Chrysotile <1. % Other Material: Non-fibrous 100 %	920121642-26	Yes	Trace (<1 %) (by CVES) by Dennis Liu on 01/04/21
2012220135RK-27 Location: Exterior, East Wall / Stucco  Analyst Description: Grey, Heterogeneous, Non-Fibrous, Cementitious, Stucco Asbestos Types: Other Material: Non-fibrous 100 %	920121642-27	No	NAD (by CVES) by Dennis Liu on 01/04/21
2012220135RK-28 Location: Exterior Overhang, NW Ceiling / Stucco  Analyst Description: White, Heterogeneous, Non-Fibrous, Cementitious, Stucco Asbestos Types: Chrysotile <1. % Other Material: Non-fibrous 100 %	920121642-28	Yes	Trace (<1 %) (by CVES) by Dennis Liu on 01/04/21
2012220135RK-29 Location: Breezeway, North Wall / Stucco  Analyst Description: Grey/Pink, Heterogeneous, Non-Fibrous, Cementitious, Stucco Asbestos Types: Chrysotile <1. % Other Material: Non-fibrous 100 %	920121642-29	Yes	Trace (<1 %) (by CVES) by Dennis Liu on 01/04/21

Client Name: Executive Environmental Services Corporation

## PLM Bulk Asbestos Report

20-Z0046-0135; Building A (MPR), Building B (Rooms 6-9),  
Building C (Rooms 10-14), Building D (Room 2), Building E (Room  
3-5), F Admin, Library (Media Center)

Client No. / HGA	Lab No.	Asbestos Present	Total % Asbestos
2012220135RK-24 Location: Exterior, West Wall / Stucco  Analyst Description: Beige/Grey, Heterogeneous, Non-Fibrous, Cementitious, Stucco Asbestos Types: Other Material: Non-fibrous 100 %	920121642-24	No	NAD (by CVES) by Dennis Liu on 01/04/21
2012220135RK-25 Location: Breezeway, South Ceiling / Stucco  Analyst Description: Grey, Heterogeneous, Non-Fibrous, Cementitious, Stucco Asbestos Types: Chrysotile <1. % Other Material: Non-fibrous 100 %	920121642-25	Yes	Trace (<1 %) (by CVES) by Dennis Liu on 01/04/21
2012220135RK-26 Location: Exterior, South Wall / Stucco / T-O Exterior Walls, Breezeway Wall And Overhangs  Analyst Description: Grey/Tan, Heterogeneous, Non-Fibrous, Cementitious, Stucco Asbestos Types: Chrysotile <1. % Other Material: Non-fibrous 100 %	920121642-26	Yes	Trace (<1 %) (by CVES) by Dennis Liu on 01/04/21
2012220135RK-27 Location: Exterior, East Wall / Stucco  Analyst Description: Grey, Heterogeneous, Non-Fibrous, Cementitious, Stucco Asbestos Types: Other Material: Non-fibrous 100 %	920121642-27	No	NAD (by CVES) by Dennis Liu on 01/04/21
2012220135RK-28 Location: Exterior Overhang, NW Ceiling / Stucco  Analyst Description: White, Heterogeneous, Non-Fibrous, Cementitious, Stucco Asbestos Types: Chrysotile <1. % Other Material: Non-fibrous 100 %	920121642-28	Yes	Trace (<1 %) (by CVES) by Dennis Liu on 01/04/21
2012220135RK-29 Location: Breezeway, North Wall / Stucco  Analyst Description: Grey/Pink, Heterogeneous, Non-Fibrous, Cementitious, Stucco Asbestos Types: Chrysotile <1. % Other Material: Non-fibrous 100 %	920121642-29	Yes	Trace (<1 %) (by CVES) by Dennis Liu on 01/04/21

Client Name: Executive Environmental Services Corporation

## PLM Bulk Asbestos Report

20-Z0046-0135; Building A (MPR), Building B (Rooms 6-9),  
Building C (Rooms 10-14), Building D (Room 2), Building E  
(Rooms 3-5), F Admin, Library (Media Center)

Client No. / HGA	Lab No.	Asbestos Present	Total % Asbestos
2012220135RK-30	920121642-30	Yes	Trace (<1 %) (by CVES) by Dennis Liu on 01/04/21
Location: Exterior Overhang, SW Ceiling / Stucco			
Analyst Description: Grey, Heterogeneous, Non-Fibrous, Cementitious, Stucco			
Asbestos Types: Chrysotile <1. %			
Other Material: Non-fibrous 100 %			

### Reporting Notes:

Analyzed By: Dennis Liu ; Date Analyzed: 1/4/2021 

\*NAD = no asbestos detected; Detection Limit <1%; Reporting Limits: CVES = 1%, 400 Pt Ct = 0.25%, 1000 Pt Ct = 0.1%; NA = not analyzed; NA/PS = not analyzed / positive stop; NVA = No Visible Asbestos; PLM (polarized light microscopy) Bulk Asbestos Analysis by EPA 600/R-93/116, including requirements for EPA 600/M4-82-020 per 40 CFR 763 (NVLAP Lab #200346-0); Note: PLM is not consistently reliable in detecting asbestos in floor coverings and similar NOB materials. TEM is currently the only method that can be used to determine if this material can be considered or treated as non-asbestos-containing in New York State (also see EPA Advisory for floor tile, FR 59, 146, 38970, 8/1/94). NIST Accreditation requirements mandate that this report must not be reproduced except in full with the approval of the laboratory. This PLM report relates ONLY to the items tested.

Reviewed By: 



Please Reply To:

**AmeriSci Los Angeles**

24416 S. Main Street, Ste 308

Carson, California 90745

TEL: (310) 834-4868 • FAX: (310) 834-4772

**FACSIMILE TELECOPY TRANSMISSION**

<b>To:</b> Yesenia Galeana Executive Environmental Services Corporation	<b>From:</b> Dennis Liu
<b>Fax #:</b>	<b>AmeriSci Job #:</b> 921011362
<b>Email:</b> info@execenv.com, ygaleana@execenv.com	<b>Subject:</b> PLM 1000 point count 48 hour Res
	<b>Client Project:</b> 20-Z0046-0135; Building A (MPR), Building B (Rooms 6-9), Building C (Rooms 10-1)

**Date:** Wednesday, January 20, 2021

**Time:** 14:17:24

**Comments:**

**Number of Pages:**

8  
(including cover sheet)

CONFIDENTIALITY NOTICE: Unless otherwise indicated, the information contained in this communication is confidential information intended for use of the individual named above. If the reader of this communication is not the intended recipient, you are hereby notified that any dissemination, distribution or copying of this communication is prohibited. If you have received this communication in error, please immediately notify the sender by telephone and return the original message to the above address via the US Postal Service at our expense. Samples are disposed of in 60 days or unless otherwise instructed by the protocol or special instructions in writing. Thank you.

**Certified Analysis   Service 24 Hours A Day • 7 Days A Week   Competitive Prices**  
visit our web site - [www.amerisci.com](http://www.amerisci.com)

**Boston • Los Angeles • New York • Richmond**

**AmeriSci Los Angeles**

24416 S. Main Street, Ste 308

Carson, California 90745

TEL: (310) 834-4868 • FAX: (310) 834-4772

**PLM Bulk Asbestos Report**

Executive Environmental Services Corpo **Date Received** 01/18/21 **AmeriSci Job #** 921011362  
Attn: Yesenia Galeana **Date Examined** 01/04/21 **P.O. #**  
310 East Foothill Blvd. **Page** 1 of 3  
Suite 200  
Arcadia, CA 91006 **RE: 20-Z0046-0135; Building A (MPR), Building B (Rooms 6-9),  
Building C (Rooms 10-14), Building D (Room 2), Building E  
(Rooms 3-5), F Admin, Library (Media Center)**

Client No. / HGA	Lab No.	Asbestos Present	Total % Asbestos
2012220135RK-05 Location: Breezeway Ceiling, NW / Stucco	921011362-01	Yes	Trace (<0.1 % pc) <sup>1</sup> (by 1000 pt ct) by Dennis Liu on 01/04/21
<b>Analyst Description:</b> Grey, Heterogeneous, Non-Fibrous, Cementitious, Stucco <b>Asbestos Types:</b> Chrysotile <0.1 % pc <b>Other Material:</b> Non-Asbestos/Inert 63.1 % <b>Comment:</b> Heat Sensitive (organic): 5.9%; Acid Soluble (inorganic): 31.0%; Inert (Non-asbestos): 63.1%			
2012220135RK-13 Location: Exterior, South Wall - East / Exterior Stucco	921011362-02	Yes	Trace (<0.1 % pc) <sup>1</sup> (by 1000 pt ct) by Dennis Liu on 01/04/21
<b>Analyst Description:</b> Grey/Tan, Heterogeneous, Non-Fibrous, Cementitious, Stucco <b>Asbestos Types:</b> Chrysotile <0.1 % pc <b>Other Material:</b> Non-Asbestos/Inert 70.5 % <b>Comment:</b> Heat Sensitive (organic): 7.3%; Acid Soluble (inorganic): 22.2%; Inert (Non-asbestos): 70.5%			
2012220135RK-22 01 Location: Exterior, East Wall / Stucco	921011362-03	Yes	Trace (<0.1 % pc) <sup>1</sup> (by 1000 pt ct) by Dennis Liu on 01/04/21
<b>Analyst Description:</b> Beige/Grey, Heterogeneous, Non-Fibrous, Cementitious, Stucco <b>Asbestos Types:</b> Chrysotile <0.1 % pc <b>Other Material:</b> Non-Asbestos/Inert 75.2 % <b>Comment:</b> Heat Sensitive (organic): 4.0%; Acid Soluble (inorganic): 20.7%; Inert (Non-asbestos): 75.2%			
2012220135RK-25 01 Location: Breezeway, South Ceiling / Stucco	921011362-04	Yes	Trace (<0.1 % pc) <sup>1</sup> (by 1000 pt ct) by Dennis Liu on 01/04/21
<b>Analyst Description:</b> Grey, Heterogeneous, Non-Fibrous, Cementitious, Stucco <b>Asbestos Types:</b> Chrysotile <0.1 % pc <b>Other Material:</b> Non-Asbestos/Inert 79.9 % <b>Comment:</b> Heat Sensitive (organic): 3.0%; Acid Soluble (inorganic): 17.1%; Inert (Non-asbestos): 79.9%			

Client Name: Executive Environmental Services Corporation

## PLM Bulk Asbestos Report

20-Z0046-0135; Building A (MPR), Building B (Rooms 6-9),  
 Building C (Rooms 10-14), Building D (Room 2), Building E  
 (Rooms 3-5), F Admin, Library (Media Center)

Client No. / HGA	Lab No.	Asbestos Present	Total % Asbestos
2012220135RK-26 02	921011362-05	Yes	Trace (<0.1 % pc) <sup>1</sup> (by 1000 pt ct) by Dennis Liu on 01/04/21
<b>Analyst Description:</b> Grey/Tan, Heterogeneous, Non-Fibrous, Cementitious, Stucco <b>Asbestos Types:</b> Chrysotile <0.1 % pc <b>Other Material:</b> Non-Asbestos/Inert 61.1 % <b>Comment:</b> Heat Sensitive (organic): 9.6%; Acid Soluble (inorganic): 29.3%; Inert (Non-asbestos): 61.1%			
2012220135RK-28 02	921011362-06	Yes	Trace (<0.1 % pc) <sup>1</sup> (by 1000 pt ct) by Dennis Liu on 01/04/21
<b>Analyst Description:</b> White, Heterogeneous, Non-Fibrous, Cementitious, Stucco <b>Asbestos Types:</b> Chrysotile <0.1 % pc <b>Other Material:</b> Non-Asbestos/Inert 65.9 % <b>Comment:</b> Heat Sensitive (organic): 10.2%; Acid Soluble (inorganic): 24.0%; Inert (Non-asbestos): 65.9%			
2012220135RK-29 02	921011362-07	Yes	Trace (<0.1 % pc) <sup>1</sup> (by 1000 pt ct) by Dennis Liu on 01/04/21
<b>Analyst Description:</b> Grey/Pink, Heterogeneous, Non-Fibrous, Cementitious, Stucco <b>Asbestos Types:</b> Chrysotile <0.1 % pc <b>Other Material:</b> Non-Asbestos/Inert 65.4 % <b>Comment:</b> Heat Sensitive (organic): 10.2%; Acid Soluble (inorganic): 24.5%; Inert (Non-asbestos): 65.4%			
2012220135RK-30 02	921011362-08	Yes	Trace (<0.1 % pc) <sup>1</sup> (by 1000 pt ct) by Dennis Liu on 01/04/21
<b>Analyst Description:</b> Grey, Heterogeneous, Non-Fibrous, Cementitious, Stucco <b>Asbestos Types:</b> Chrysotile <0.1 % pc <b>Other Material:</b> Non-Asbestos/Inert 70.7 % <b>Comment:</b> Heat Sensitive (organic): 5.1%; Acid Soluble (inorganic): 24.2%; Inert (Non-asbestos): 70.7%			

Client Name: Executive Environmental Services Corporation

## PLM Bulk Asbestos Report

20-Z0046-0135; Building A (MPR), Building B (Rooms 6-9),  
Building C (Rooms 10-14), Building D (Room 2), Building E  
(Rooms 3-5), F Admin, Library (Media Center)

---

### Reporting Notes:

(1) EPA 1000 Point Count Analysis performed on inert residue remaining after 480C heat and HCl acid treatments.

Analyzed By: Dennis Liu ; Date Analyzed: 1/4/2021 1-20-21

\*NAD = no asbestos detected; Detection Limit <1%; Reporting Limits: CVES = 1%, 400 Pt Ct = 0.25%, 1000 Pt Ct = 0.1%; NA = not analyzed; NA/PS = not analyzed / positive stop; NVA = No Visible Asbestos; PLM (polarized light microscopy) Bulk Asbestos Analysis by EPA 600/R-93/116, including requirements for EPA 600/M4-82-020 per 40 CFR 763 (NVLAP Lab #200346-0); Note: PLM is not consistently reliable in detecting asbestos in floor coverings and similar NOB materials. TEM is currently the only method that can be used to determine if this material can be considered or treated as non-asbestos-containing in New York State (also see EPA Advisory for floor tile, FR 59, 146, 38970, 8/1/94). NIST Accreditation requirements mandate that this report must not be reproduced except in full with the approval of the laboratory. This PLM report relates ONLY to the items tested.

Reviewed By: 



# Industrial Hygiene Laboratory Submittal Asbestos -- PLM

<b>Originating Office</b>	<b>Lab Submitted to:</b>
<input checked="" type="checkbox"/> 310 E. Foothill Blvd., Suite 200 Arcadia, CA 91006 Phone: 626.441.7050 Fax: 626.441.0016	<input checked="" type="checkbox"/> AmerSci <input type="checkbox"/> EMLab (Glendale) <input type="checkbox"/> LATesting

<input type="checkbox"/> Routine (5 Working Days)	<input checked="" type="checkbox"/> RUSH (surcharges may apply) Circle One 6 24 48 3 to 5 hours hours hours days	<b>Project #:</b> 20-Z0046-0135	<b>Sampled by:</b> Tim Galeana/Rhys Kuzmic	<b>Site Zip Code:</b> 91770	<b>Sample Date:</b> 12/22/2020	<b>Page 4 of 6</b>
--	--	------------------------------------	---	--------------------------------	-----------------------------------	--------------------

**The receiving Laboratory is required to complete the following:**

1. All invoices are to be sent to: 310 E. Foothill Blvd., Suite 200, Arcadia, CA 91006 with a copy of the lab report.
2. Analyze all samples by PLM by EPA 600/R-93/116.
3. Stop analysis of homogeneous groups at first positive that is greater than or equal to 1.0%

**Building Name:** Bryn Mawr Academy

**Optional Items to be completed by the laboratory (if check marked):**

<input checked="" type="checkbox"/> US Mail Report to:	<input checked="" type="checkbox"/> Originating office check marked above	<input type="checkbox"/> Other:	<input checked="" type="checkbox"/> Email Report to: <u>info@excecenv.com</u>	<input checked="" type="checkbox"/> Alternate billing address:	<input type="checkbox"/> Other: <u>ygaleana@excecenv.com</u>
--	---	---------------------------------	---	--	--

Sample No.:	Sample Location - Include Room Information where appropriate	Material Description	Homogeneous Location	No.	Quantity	Percent Damaged
-01	Extens, West wall	Stucco	To extens walls, overhangs and south breezeway walls + ceiling connected to Bluffs	1	4,000 sq ft	<1
-02	Extens, North wall					
-03	Extens, east wall					
-04	Extens, south wall (in breezeway)					
-05	Breezeway ceiling, NW					

Prefix: 201222013512K

<b>Notes:</b>	<b>Released By, Date, &amp; Time:</b>	<b>Received By, Date, &amp; Time:</b>	<b>Released By, Date, &amp; Time:</b>
	<u>PLM</u> 12/22/2020 3:00 PM	<u>PLM</u> 12/28/2020 10:00 AM	<u>PLM</u> 12/28/2020 11:10
	<u>PLM</u> 12/28/2020 11:00 AM		

Rev. 1/19 ©Copyright 2019 All Rights Reserved Form: AL-006PLM





# Industrial Hygiene Laboratory Submittal Asbestos -- PLM

## Originating Office

☒ 310 E. Foothill Blvd., Suite 200  
Arcadia, CA 91006  
Phone: 626.441.7050  
Fax: 626.441.0016

## Lab Submitted to:

☒ AmeriSci  
☐ EMLab (Glendale)  
☐ LA Testing

☐ Routine (5 Working Days)  
☒ RUSH (surcharges may apply) Circle 6 24 48 3 to 5 hours hours hours days

Project #: 20-Z0046-0135

Sampled by: Tim Galeana/Rhys Kuzmick

Site Zip Code: 91770

Sample Date: 12/22/2020

Page 2 of 6

## The receiving Laboratory is required to complete the following:

1. All invoices are to be sent to: 310 E. Foothill Blvd., Suite 200, Arcadia, CA 91006 with a copy of the lab report.
2. Analyze all samples by PLM by EPA 600/R-93/116.
3. Stop analysis of homogeneous groups at first positive that is greater than or equal to 1.0%
4. All lab reports and invoices are to contain the Project Number from above.
5. Unsigned and reports marked draft are unacceptable.
6. Report to the attention of: Yessenia Galeana, Phone: (562) 889-1327

Building Name: Building 13 (Rm 6-9)

## Optional Items to be completed by the laboratory (if check marked):

☒ US Mail Report to: ☒ Originating office check marked above ☐ Other: ☐ Alternate billing address: ☒ Email Report to: ☒ Info@excecenv.com ☒ Other: yzaleana@excecenv.com

Sample No.:	Sample Location - Include Room information where appropriate	Material Description	Homogeneous Location	No.	Quantity	Percent Damaged
-06	Exterior, West Wall	Exterior stucco	T-O exterior walls	2	3,400 SF	< 1
-07	Exterior, South Wall - West					
-08	Exterior, South Wall - East					
-09	Exterior, East Wall					
-10	Exterior, North Wall					

Prefix: 2012220135RK

## Notes:

Released By, Date, & Time:

PLM/KM 12/22/2020 3:00 PM

Received By, Date, & Time:

PLM/KM 12/28/2020 11:00 AM

Released By, Date, & Time:

PLM/KM 12/28/2020 11:00





# Industrial Hygiene Laboratory Submittal Asbestos -- PLM

## Originating Office

☒ 310 E. Foothill Blvd., Suite 200  
Arcadia, CA 91006  
Phone: 626.441.7050  
Fax: 626.441.0016

## Lab Submitted to:

☒ AmeriSci  
☐ EMLab (Glendale)  
☐ LA Testing

☐ Routine  
☒ Rush (surcharges may apply)  
Days: 5 Working One hours 6 24 48 3 to 5 days

Project #: 20-Z0046-0135

Sampled by: Tim Galeana/Rhys Kuzmick  
(pk)

Site Zip Code: 91770

Sample Date: 12/22/2020

Page 4 of 6

## The receiving Laboratory is required to complete the following:

1. All invoices are to be sent to: 310 E. Foothill Blvd., Suite 200, Arcadia, CA 91006 with a copy of the lab report.
2. Analyze all samples by PLM by EPA 600/R-93/116.
3. Stop analysis of homogeneous groups at first positive that is greater than or equal to 1.0%

Building Name: Building D (Room 12)

4. All lab reports and invoices are to contain the Project Number from above.
5. Unsigned and reports marked draft are unacceptable.
6. Report to the attention of: Yessenia Galeana, Phone: (562) 889-1327

## Optional items to be completed by the laboratory (if check marked):

☒ US Mail Report to: ☒ Originating office check marked above ☐ Other:

☐ Alternate billing address:

Email Report to: ☒ Info@excecenv.com

☒ Other: ygaleana@excecenv.com;

92an1642

Sample No.:	Sample Location - Include Room Information where appropriate	Material Description	Homogeneous Location	No.	Quantity	Percent Damaged
Prefix: 2012220135RK						
-16	Exterior, North Wall - West	Exterior stucco	TD exterior walls	4	4,500 SF	< 1
-17	Exterior, North Wall - east					
-18	Exterior, east Wall					
-19	Exterior, south Wall					
-20	Exterior, West Wall					

## Notes:

Released By, Date, & Time:

By: Jmpf 12/22/2020 3:00 PM  
12/28/2020 11:08 AM

Received By, Date, & Time:

By: Jmpf 12/28/2020 10:00 AM

Released By, Date, & Time:

By: PJ 12/28/2020 11:10



# Industrial Hygiene Laboratory Submittal Asbestos -- PLM

## Originating Office

☒ 310 E. Foothill Blvd., Suite 200  
Arcadia, CA 91006  
Phone: 626.441.7050  
Fax: 626.441.0016

## Lab Submitted to:

☒ AmerSci  
☐ EMLab (Glendale)  
☐ LA Testing

☐ Routine (5 Working Days)  
☒ RUSH (surcharges may apply) Circle 6 24 48 3 to 5 hours hours hours days

Project #: 20-Z0046-0135

Sampled by: Tim Galeana/Rhys Kuzmic

Site Zip Code: 91770

Sample Date: 12/22/2020

Page 5 of 6

## The receiving Laboratory is required to complete the following:

1. All invoices are to be sent to: 310 E. Foothill Blvd., Suite 200, Arcadia, CA 91006 with a copy of the lab report.
2. Analyze all samples by PLM by EPA 600/R-93/116.
3. Stop analysis of homogeneous groups at first positive that is greater than or equal to 1.0%

Building Name: Building E (Rooms 3-5)

4. All lab reports and invoices are to contain the Project Number from above.
5. Unsigned and reports marked draft are unacceptable.
6. Report to the attention of: Yessenia Galeana, Phone: (562) 889-1327

## Optional items to be completed by the laboratory (if check marked):

☒ US Mail Report to: ☒ Originating office check marked above ☐ Other: ☐ Alternate billing address: ☒ Email Report to: ☒ Info@excecenv.com ☒ Other: ygaleana@excecenv.com

Sample No.:	Sample Location - Include Room Information where appropriate	Material Description	Homogeneous Location	No.	Quantity	Percent Damaged
-21	Exterior, north wall	Stucco	T-O exterior walls and breezeway walls and ceilings	5	4,300 SF	<1
-22	Exterior, east wall					
-23	Exterior, south wall					
-24	Exterior, west wall					
-25	Breezeway, south ceiling					

Prefix: 2012220135R

## Notes:

Released By, Date, & Time: Rm Kuz 12/23/2020 3:10 PM

Received By, Date, & Time:

1/16/2020 11:00 AM

Released By, Date, & Time:

PT 12/28/20 11:10



# Industrial Hygiene Laboratory Submittal Asbestos -- PLM

## Originating Office

☒ 310 E. Foothill Blvd., Suite 200  
Arcadia, CA 91006  
Phone: 626.441.7050  
Fax: 626.441.0016

## Lab Submitted to:

☒ AmeriSci  
☐ EMLab (Glendale)  
☐ LA Testing

☐ Routine (5 Working Days)  
☒ RUSH (surcharges may apply)  
Circle One 6 hours 24 hours 48 hours 3 to 5 days

Project #: 20-Z0046-0135

Sampled by: Tim Galeana/Rhys Kuzmick

Site Zip Code: 91770

Sample Date: 12/22/2020

Page 6 of 6

## The receiving Laboratory is required to complete the following:

1. All invoices are to be sent to: 310 E. Foothill Blvd., Suite 200, Arcadia, CA 91006 with a copy of the lab report.
2. Analyze all samples by PLM by EPA 600/R-93/116.
3. Stop analysis of homogeneous groups at first positive that is greater than or equal to 1.0%

4. All lab reports and invoices are to contain the Project Number from above.
5. Unsigned and reports marked draft are unacceptable.
6. Report to the attention of: Yessenia Galeana, Phone: (562) 889-1327

## Optional Items to be completed by the laboratory (if check marked):

☒ US Mail Report to: ☒ Originating office check marked above ☐ Other:

Email Report to: ☒ Info@excecenv.com ☐ Alternate billing address:

☒ Other: ygaleana@excecenv.com;

Sample No.:	Sample Location - Include Room information where appropriate	Material Description	Homogeneous Location	No.	Quantity	Percent Damaged
-26	Extend / south wall	Stucco	T-O extend walls, breezeway wall and overhangs	6	2,200 SF	<1
-27	Extend / east wall					
-28	Extend overhangs, NW ceiling					
-29	Breezeway / north wall					
-30	Extend overhang, SW ceiling					

Prefix: 2012220135RK

## Notes:

Released By, Date, & Time: Day KM, 12/23/2020 3:00PM

Received By, Date, & Time:

12/29/2024 11:00 AM

Released By, Date, & Time:

12/28/20 11:10



Please Reply To:

**AmeriSci Los Angeles**

24416 S. Main Street, Ste 308

Carson, California 90745

TEL: (310) 834-4868 • FAX: (310) 834-4772

**FACSIMILE TELECOPY TRANSMISSION**

**To:** Yesenia Galeana  
Executive Environmental Services Corporation  
**Fax #:**  
**Email:** info@execenv.com, ygaleana@execenv.com

**From:** Thu M. Nguyen  
**AmeriSci Job #:** 920121674  
**Subject:** PLM 5 day Results  
**Client Project:** 20-Z0046-0135; Campus

**Date:** Monday, January 4, 2021

**Time:** 22:03:59

**Comments:**

**Number of Pages:** 1  
(including cover sheet)

CONFIDENTIALITY NOTICE: Unless otherwise indicated, the information contained in this communication is confidential information intended for use of the individual named above. If the reader of this communication is not the intended recipient, you are hereby notified that any dissemination, distribution or copying of this communication is prohibited. If you have received this communication in error, please immediately notify the sender by telephone and return the original message to the above address via the US Postal Service at our expense. Samples are disposed of in 60 days or unless otherwise instructed by the protocol or special instructions in writing. Thank you.

**Certified Analysis   Service 24 Hours A Day • 7 Days A Week   Competitive Prices**  
visit our web site - [www.amerisci.com](http://www.amerisci.com)

**Boston • Los Angeles • New York • Richmond**

**AmeriSci Los Angeles**

24416 S. Main Street, Ste 308

Carson, California 90745

TEL: (310) 834-4868 • FAX: (310) 834-4772

**PLM Bulk Asbestos Report**

Executive Environmental Services Corpo **Date Received** 12/29/20 **AmeriSci Job #** 920121674  
Attn: Yesenia Galeana **Date Examined** 01/04/21 **P.O. #**  
310 East Foothill Blvd. **Page** 1 **of** 3  
Suite 200 **RE: 20-Z0046-0135; Campus**  
Arcadia, CA 91006

Client No. / HGA	Lab No.	Asbestos Present	Total % Asbestos
2012290135RK-31 <b>Location:</b> West Parking Lot, North / Asphalt Paving / West Parking Lot  <b>Analyst Description:</b> Black, Heterogeneous, Non-Fibrous, Asphalt <b>Asbestos Types:</b> <b>Other Material:</b> Non-fibrous 100 %	920121674-01	<b>No</b>	NAD (by CVES) by Thu M. Nguyen on 01/04/21
2012290135RK-32 <b>Location:</b> West Parking Lot, Near Center / Asphalt Paving  <b>Analyst Description:</b> Black, Heterogeneous, Non-Fibrous, Asphalt <b>Asbestos Types:</b> <b>Other Material:</b> Non-fibrous 100 %	920121674-02	<b>No</b>	NAD (by CVES) by Thu M. Nguyen on 01/04/21
2012290135RK-33 <b>Location:</b> West Parking Lot, SW / Asphalt Paving  <b>Analyst Description:</b> Black, Heterogeneous, Non-Fibrous, Asphalt <b>Asbestos Types:</b> <b>Other Material:</b> Non-fibrous 100 %	920121674-03	<b>No</b>	NAD (by CVES) by Thu M. Nguyen on 01/04/21
2012290135RK-34 <b>Location:</b> Northeast Parking Lot, North / Asphalt Paving / Northeast Parking Lot  <b>Analyst Description:</b> Black, Heterogeneous, Non-Fibrous, Asphalt <b>Asbestos Types:</b> <b>Other Material:</b> Non-fibrous 100 %	920121674-04	<b>No</b>	NAD (by CVES) by Thu M. Nguyen on 01/04/21
2012290135RK-35 <b>Location:</b> Northeast Parking Lot, East / Asphalt Paving  <b>Analyst Description:</b> Black, Heterogeneous, Non-Fibrous, Asphalt <b>Asbestos Types:</b> <b>Other Material:</b> Non-fibrous 100 %	920121674-05	<b>No</b>	NAD (by CVES) by Thu M. Nguyen on 01/04/21

Client Name: Executive Environmental Services Corporation

**PLM Bulk Asbestos Report**

20-Z0046-0135; Campus

<b>Client No. / HGA</b>	<b>Lab No.</b>	<b>Asbestos Present</b>	<b>Total % Asbestos</b>
2012290135RK-36 <b>Location:</b> Northeast Parking Lot, South / Asphalt Paving  <b>Analyst Description:</b> Black, Heterogeneous, Non-Fibrous, Asphalt <b>Asbestos Types:</b> <b>Other Material:</b> Non-fibrous 100 %	920121674-06	<b>No</b>	NAD  (by CVES) by Thu M. Nguyen on 01/04/21
2012290135RK-37 <b>Location:</b> Playground, NE / Asphalt Paving / Playground  <b>Analyst Description:</b> Black, Heterogeneous, Non-Fibrous, Asphalt <b>Asbestos Types:</b> <b>Other Material:</b> Non-fibrous 100 %	920121674-07	<b>No</b>	NAD  (by CVES) by Thu M. Nguyen on 01/04/21
2012290135RK-38 <b>Location:</b> Playground, East At Volleyball Court / Asphalt Paving  <b>Analyst Description:</b> Black, Heterogeneous, Non-Fibrous, Asphalt <b>Asbestos Types:</b> <b>Other Material:</b> Non-fibrous 100 %	920121674-08	<b>No</b>	NAD  (by CVES) by Thu M. Nguyen on 01/04/21
2012290135RK-39 <b>Location:</b> Playground, Near Center / Asphalt Paving  <b>Analyst Description:</b> Black, Heterogeneous, Non-Fibrous, Asphalt <b>Asbestos Types:</b> <b>Other Material:</b> Non-fibrous 100 %	920121674-09	<b>No</b>	NAD  (by CVES) by Thu M. Nguyen on 01/04/21
2012290135RK-40 <b>Location:</b> Playground, West / Asphalt Paving  <b>Analyst Description:</b> Black, Heterogeneous, Non-Fibrous, Asphalt <b>Asbestos Types:</b> <b>Other Material:</b> Non-fibrous 100 %	920121674-10	<b>No</b>	NAD  (by CVES) by Thu M. Nguyen on 01/04/21
2012290135RK-41 <b>Location:</b> Playground, South Near Storage Shed / Asphalt Paving  <b>Analyst Description:</b> Black, Heterogeneous, Non-Fibrous, Asphalt <b>Asbestos Types:</b> <b>Other Material:</b> Non-fibrous 100 %	920121674-11	<b>No</b>	NAD  (by CVES) by Thu M. Nguyen on 01/04/21



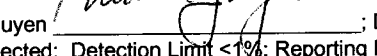
Client Name: Executive Environmental Services Corporation

**PLM Bulk Asbestos Report**

20-Z0046-0135; Campus

Client No. / HGA	Lab No.	Asbestos Present	Total % Asbestos
2012290135RK-42	920121674-12	No	NAD
Location: Handball Court, North / Asphalt Paving / Handball Court			(by CVES) by Thu M. Nguyen on 01/04/21
Analyst Description: Black, Heterogeneous, Non-Fibrous, Asphalt			
Asbestos Types:			
Other Material: Non-fibrous 100 %			
2012290135RK-43	920121674-13	No	NAD
Location: Handball Court, Near Center / Asphalt Paving			(by CVES) by Thu M. Nguyen on 01/04/21
Analyst Description: Black, Heterogeneous, Non-Fibrous, Asphalt			
Asbestos Types:			
Other Material: Non-fibrous 100 %			
2012290135RK-44	920121674-14	No	NAD
Location: Handball Court, South / Asphalt Paving			(by CVES) by Thu M. Nguyen on 01/04/21
Analyst Description: Black, Heterogeneous, Non-Fibrous, Asphalt			
Asbestos Types:			
Other Material: Non-fibrous 100 %			

**Reporting Notes:**

Analyzed By: Thu M. Nguyen ; Date Analyzed: 1/4/2021 1/4/21  
 \*NAD = no asbestos detected; Detection Limit <1%; Reporting Limits: CVES = 1%, 400 Pt Ct = 0.25%, 1000 Pt Ct = 0.1%; NA = not analyzed; NA/PS = not analyzed / positive stop; NVA = No Visible Asbestos; PLM (polarized light microscopy) Bulk Asbestos Analysis by EPA 600/R-93/116, including requirements for EPA 600/M4-82-020 per 40 CFR 763 (NVLAP Lab #200346-0); Note: PLM is not consistently reliable in detecting asbestos in floor coverings and similar NOB materials. TEM is currently the only method that can be used to determine if this material can be considered or treated as non-asbestos-containing in New York State (also see EPA Advisory for floor tile, FR 59, 146, 38970, 8/1/94). NIST Accreditation requirements mandate that this report must not be reproduced except in full with the approval of the laboratory. This PLM report relates ONLY to the items tested.

Reviewed By: 

020124674



# Industrial Hygiene Laboratory Submittal Asbestos -- PLM

**Originating Office**  
☒ 310 E. Foothill Blvd., Suite 200  
Arcadia, CA 91006  
Phone: 626.441.7050  
Fax: 626.441.0016

**Lab Submitted to:**  
☒ AmerSci  
☐ EMLab (Glendale)  
☐ LA Testing

☒ Routine (5 Days) ☐ RUSH (surcharges may apply) Circle 6 24 48 hours hours hours days

**Project #:** 20-Z0046-0135

**Sampled by:** Tim Galeana/Rhys Kuzmic

**Site Zip Code:** 91770

**Sample Date:** 12/29/2020

**Page** 7 of 9

**Building Name:** Cammus

**The receiving Laboratory is required to complete the following:**

1. All invoices are to be sent to: 310 E. Foothill Blvd., Suite 200, Arcadia, CA 91006 with a copy of the lab report.
2. Analyze all samples by PLM by EPA 600/R-93/116.
3. Stop analysis of homogeneous groups at first positive that is greater than or equal to 1.0%

**Optional Items to be completed by the laboratory (if check marked):** ☒ Email Report to: [Info@execenv.com](mailto:Info@execenv.com) ☒ Other: [ygaleana@execenv.com](mailto:ygaleana@execenv.com);  
☒ US Mail Report to: ☒ Originating office check marked above ☐ Other: Alternate billing address:

Sample No.:	Sample Location - Include Room information where appropriate	Material Description	Homogeneous Location	No.	Quantity	Percent Damaged
-31	West Parking Lot, north	Asphalt paving	West Parking Lot	7	10,000 SF	<1
-32	West Parking Lot, new center	↓		↓	↓	↓
-33	West Parking Lot, SW	↓		↓	↓	↓
-34	Northeast Parking Lot, north	Asphalt paving	Northeast Parking Lot	8	10,500 SF	<1
-35	Northeast Parking Lot, east	↓		↓	↓	↓
-36	Northeast Parking Lot, south	↓		↓	↓	↓

Prefix: 2012290135R

**Notes:**

Released By: Date: 12/29/2020 1:30M	Received By: Date: 12/29/2020 13:30
DHYT	

Form: AL-006PLM

2012674



Industrial Hygiene Laboratory Submittal  
Asbestos -- PLM

**Originating Office**  
☒ 310 E. Foothill Blvd., Suite 200  
Arcadia, CA 91006  
Phone: 626.441.7050  
Fax: 626.441.0016

**Lab Submitted to:**  
☒ AmeriSci  
☐ EMLab (Glendale)  
☐ LA Testing

☒ Routine (5 Days) ☐ RUSH (surcharges may apply) Circle 6 24 48 hours hours days  
**Project #:** 20-Z0046-0135  
**Sampled by:** Tim Galeana/Rhys Kuzmic  
**Site Zip Code:** 91770  
**Sample Date:** 12/29/2020 **Page 8 of 9**

**The receiving Laboratory is required to complete the following:**

1. All invoices are to be sent to: 310 E. Foothill Blvd., Suite 200, Arcadia, CA 91006 with a copy of the lab report.
2. Analyze all samples by PLM by EPA 600/R-93/116.
3. Stop analysis of homogeneous groups at first positive that is greater than or equal to 1.0%

**Building Name:** Campas

**Optional items to be completed by the laboratory (if check marked):** ☒ Email Report to: [info@excecenv.com](mailto:info@excecenv.com) ☒ Other: [ygaleana@excecenv.com](mailto:ygaleana@excecenv.com)  
☒ US Mail Report to: ☒ Originating office check marked above ☐ Other: ☐ Alternate billing address:

Sample No.:	Sample Location - Include Room information where appropriate	Material Description	Homogeneous Location	No.	Quantity	Percent Damaged
-37	Playground, NE	Asphalt paving	Playground	9	36,000SF	<1
-38	Playground, east of volleyball court					
-39	Playground, near center					
-40	Playground, west					
-41	Playground, south near storage shed					

Prefix: 2012290135Rk

**Notes:**

Released By, Date & Time:	Received By, Date & Time:	Released By, Date & Time:
Blank 12/29/2020 1:30PM	OK 12/29/2020 1:30	



020121674

020121674

020121674

020121674

- 020121674

020121674

020121674

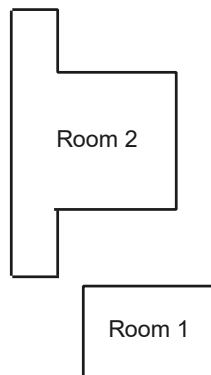
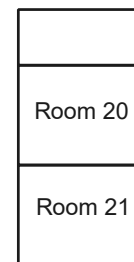
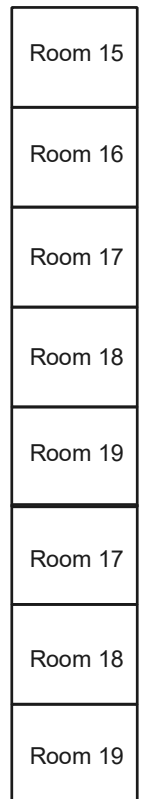
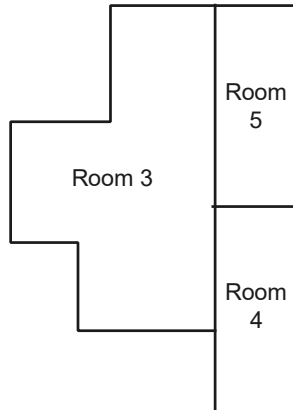
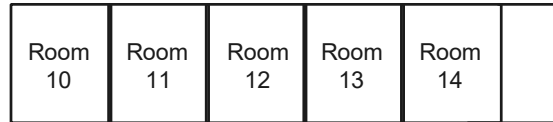
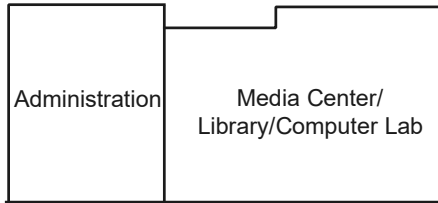
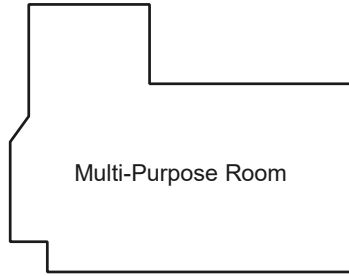
020121674

020121674

020121674

020121674

## **APPENDIX B – SAMPLE LOCATIONS DRAWINGS**



**Client:** Rosemead SD

**Project#:** 20-Z0046-0135

**Info:** Site Map

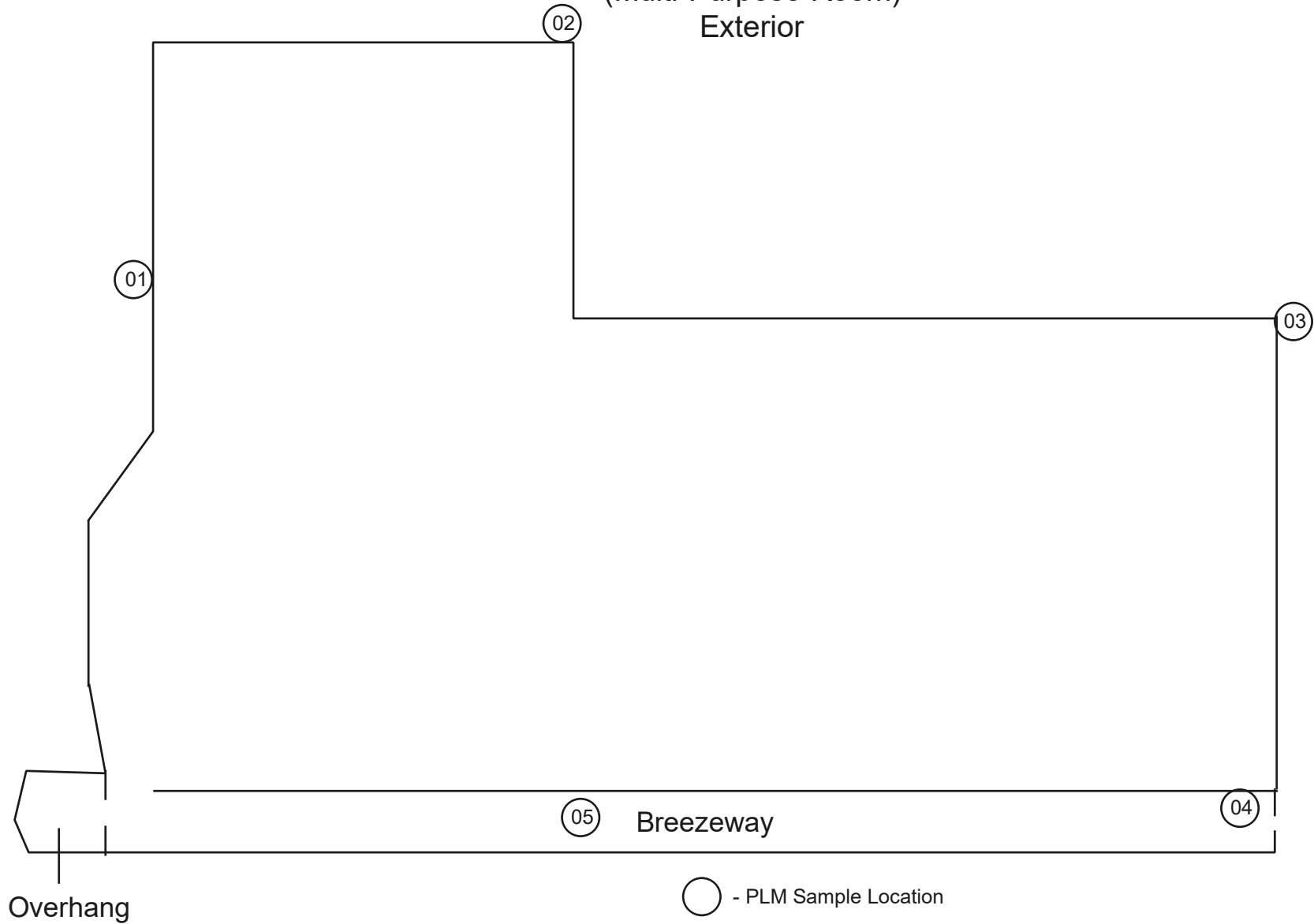


**EXECUTIVE ENVIRONMENTAL**  
HEALTH & SAFETY SIMPLIFIED

**Site:** Rosemead ES  
**Address:** 3720 Rio Honda Avenue  
Rosemead, CA 91770

Drawing Not to Scale - © 2012

Building A  
(Multi-Purpose Room)  
Exterior



**Client:** Rosemead SD

**Project #:** 20-Z0046-0135

**Info:** PLM Sample Location



**EXECUTIVE ENVIRONMENTAL**  
HEALTH & SAFETY SIMPLIFIED

**Site:** Savannah ES  
**Address:** 3720 Rio Honda Avenue  
Rosemead, CA 91770

Drawing Not to Scale - © 2012

Building B  
(Classrooms 6 thru 9)  
Exterior



○ - PLM Sample Location



**Client:** Rosemead SD

**Project #:** 20-Z0046-0135

**Info:** PLM Sample Location



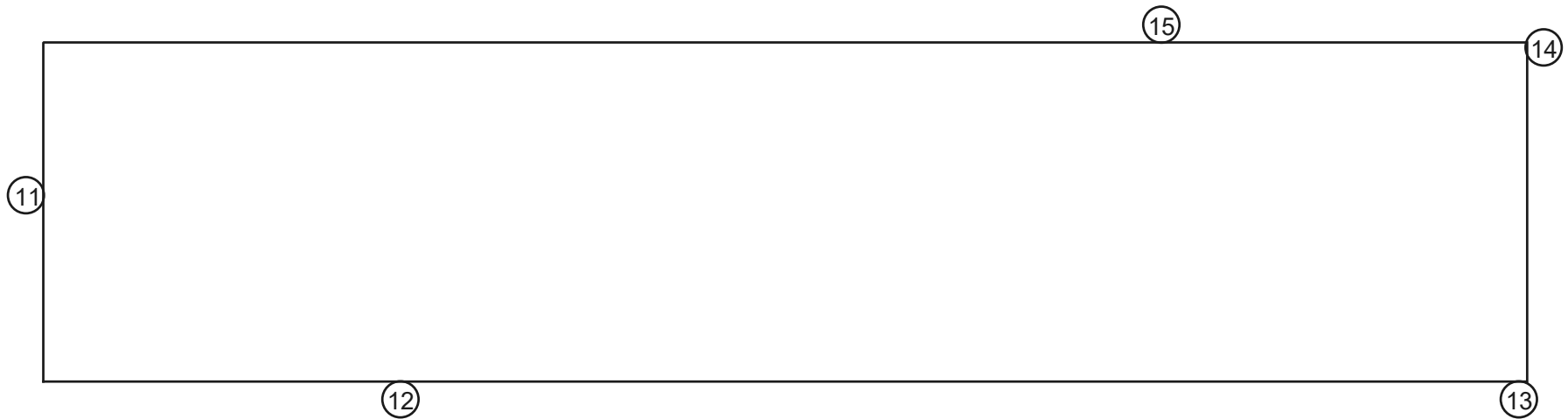
**EXECUTIVE ENVIRONMENTAL**  
HEALTH & SAFETY SIMPLIFIED

**Site:** Savannah ES  
**Address:** 3720 Rio Honda Avenue  
Rosemead, CA 91770

Drawing Not to Scale - © 2012



Building C  
(Classroom Rooms 10 thru 14)  
Exterior



○ - PLM Sample Location



**Client:** Rosemead SD

**Project #:** 20-Z0046-0135

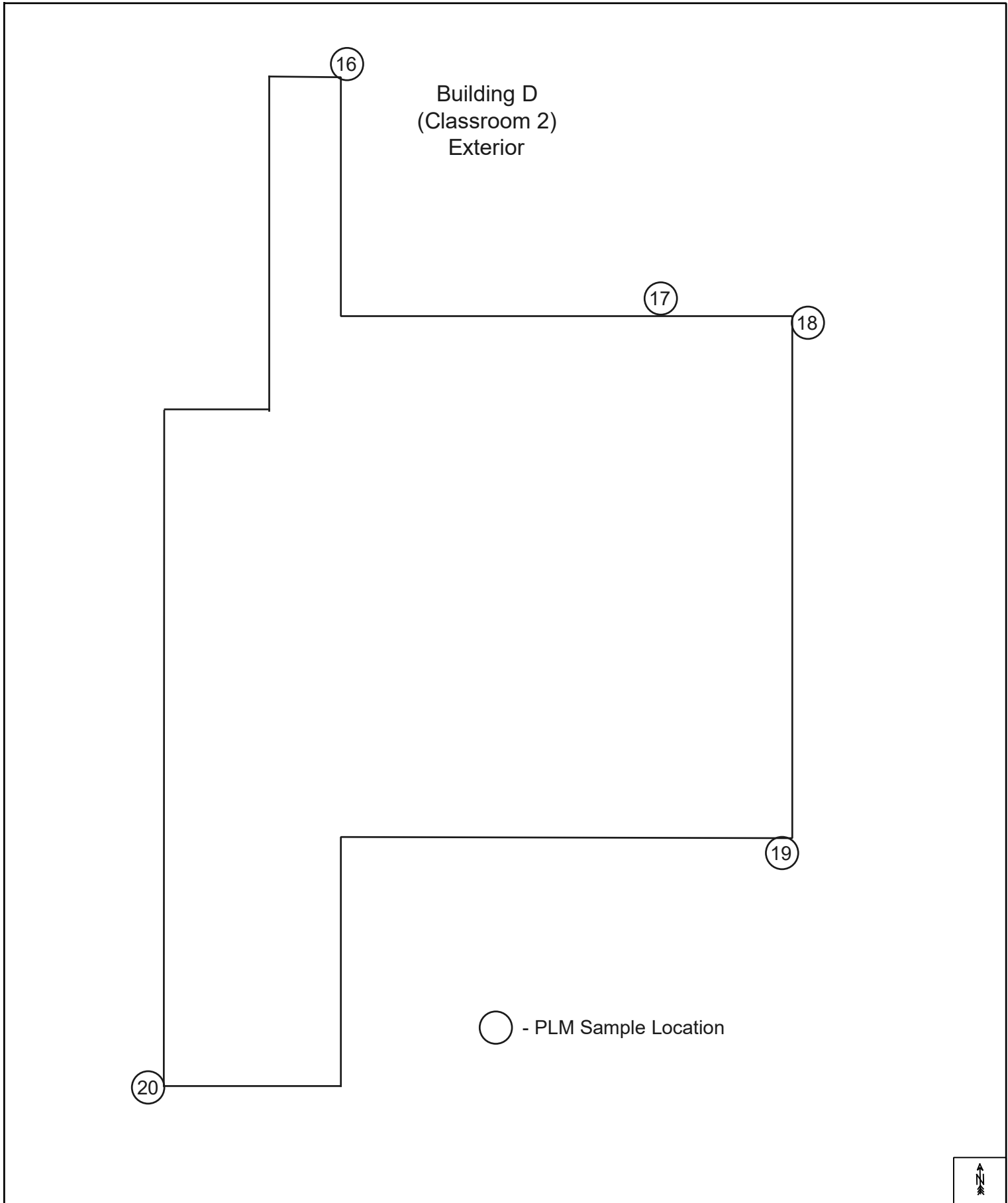
**Info:** PLM Sample Location



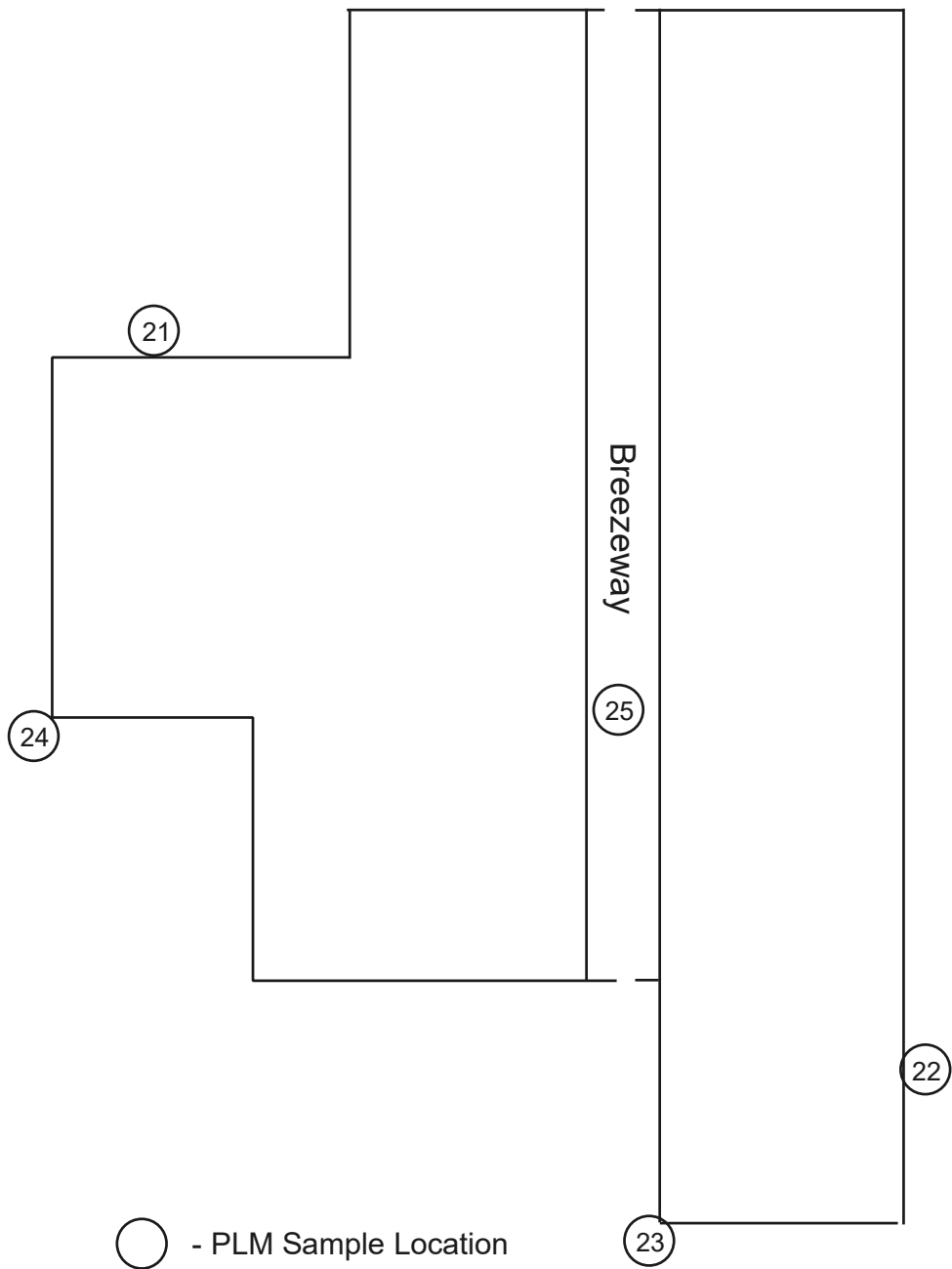
**EXECUTIVE ENVIRONMENTAL**  
HEALTH & SAFETY SIMPLIFIED

**Site:** Savannah ES  
**Address:** 3720 Rio Honda Avenue  
Rosemead, CA 91770

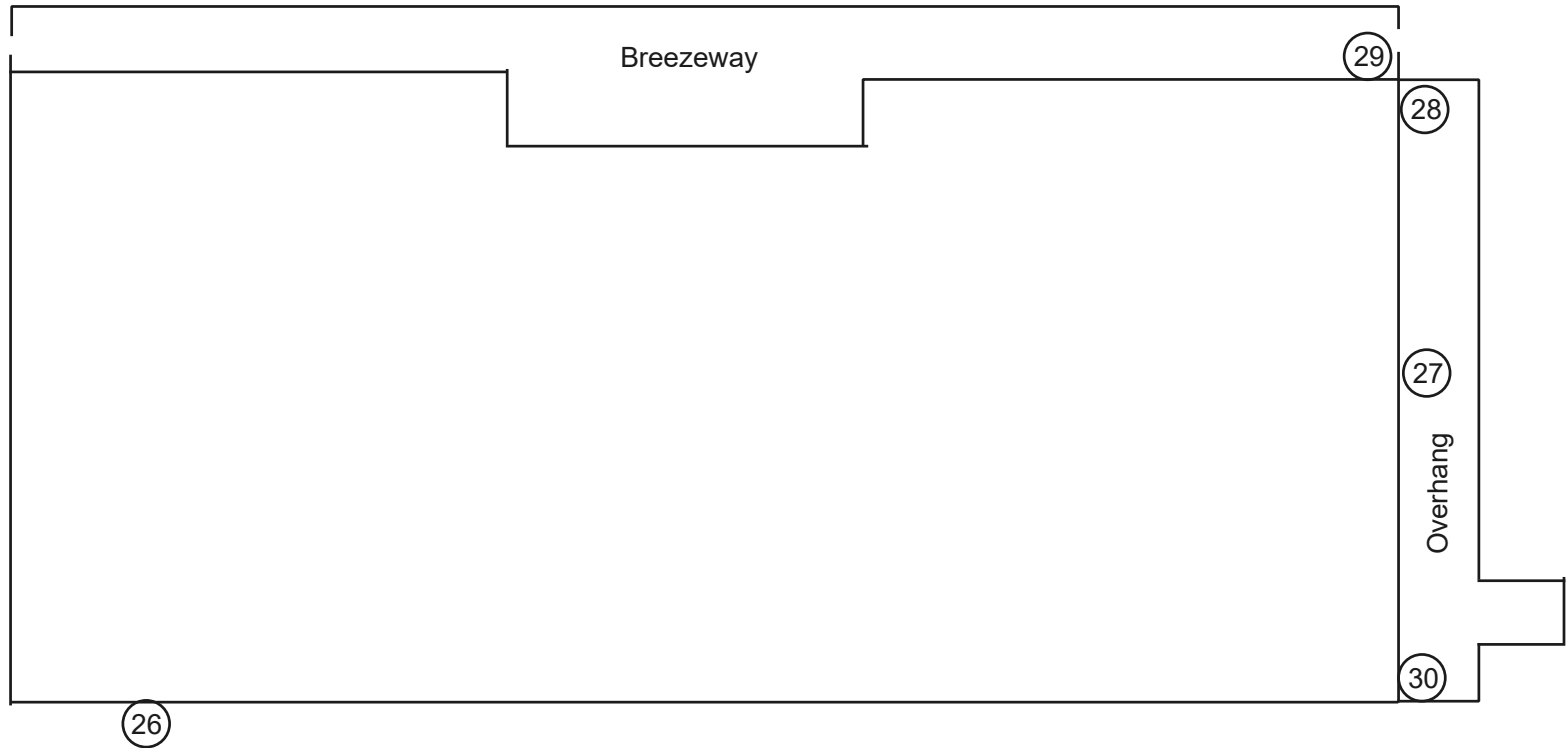
Drawing Not to Scale - © 2012



Building E  
(Classrooms 3 thru 5)  
Exterior



Building F (Administration/Library/Media Center)  
Exterior



○ - PLM Sample Location



**Client:** Rosemead SD

**Project #:** 20-Z0046-0135

**Info:** PLM Sample Location

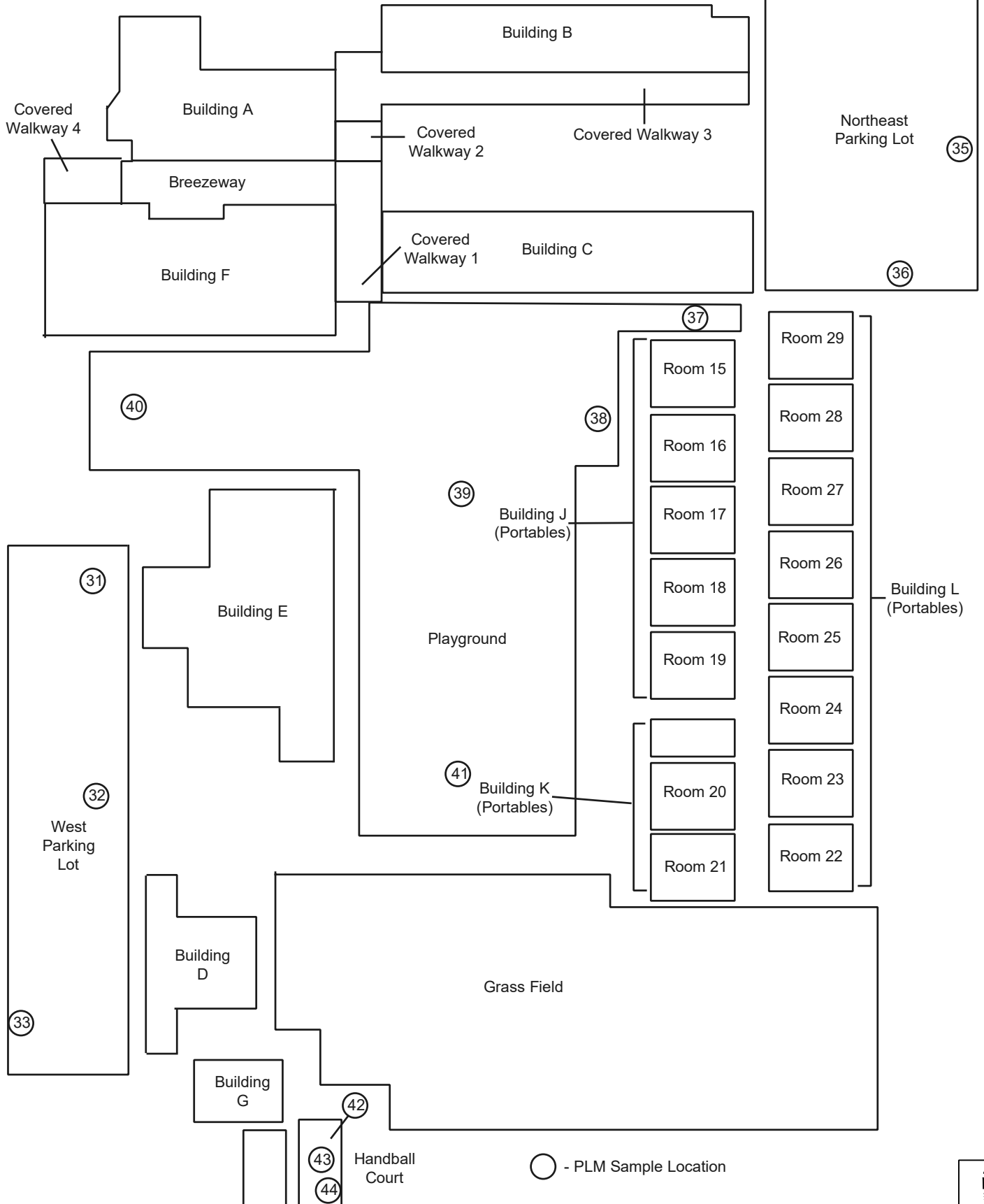


**EXECUTIVE ENVIRONMENTAL**  
HEALTH & SAFETY SIMPLIFIED

**Site:** Savannah ES  
**Address:** 3720 Rio Honda Avenue  
Rosemead, CA 91770

Drawing Not to Scale - © 2012

# Savannah Elementary School Covered Walkways



**Client:** Rosemead SD

**Project#:** 20-Z0046-0135

**Info:** PLM Sample Location



**EXECUTIVE ENVIRONMENTAL**  
HEALTH & SAFETY SIMPLIFIED

**Site:** Savannah ES  
**Address:** 3720 Rio Honda Avenue  
Rosemead, CA 91770

Drawing Not to Scale - © 2012

## **APPENDIX C – STAFF CERTIFICATION**

State of California  
Division of Occupational Safety and Health  
**Certified Asbestos Consultant**

**Rhys D Kuzmic**

Name



Certification No. **09-4586**

Expires on **01/20/21**

This certification was issued by the Division of Occupational Safety and Health as authorized by Sections 7180 et seq. of the Business and Professions Code.