



# Rosemead School District

3907 Rosemead Blvd.  
Rosemead, CA 91770  
[www.rosemead.k12.ca.us](http://www.rosemead.k12.ca.us)  
@rosemeadsupt

Contact: Cynthia Bracamonte  
Exec. Asst. to the Superintendent  
cbracamonte@rosemead.k12.ca.us  
Tel 626.312.2900 x212  
Fax 626.307.6148

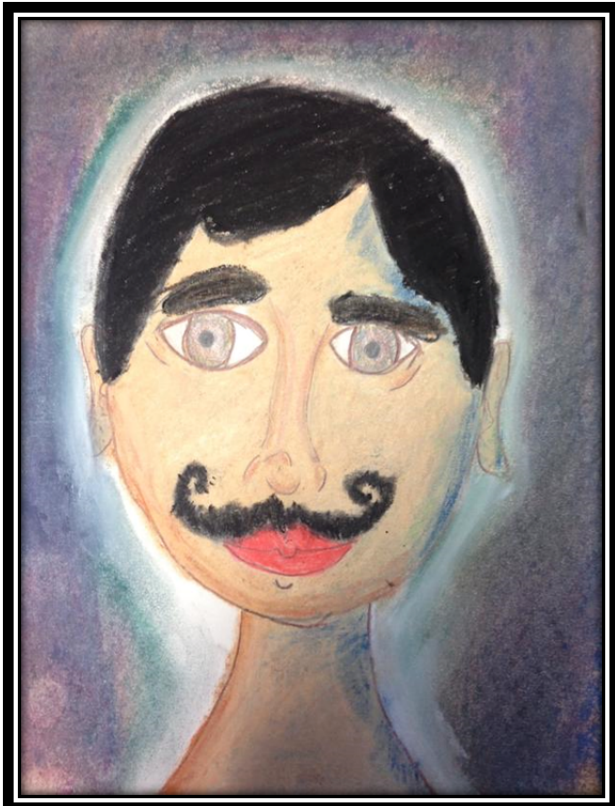
## News Release

FOR IMMEDIATE RELEASE: June 12, 2015

### Rosemead School District Celebrates 2<sup>nd</sup> Grade Student Artist Isabella Lemos for her Artwork “Ugly Looking Mustache” being Honored at the Department of Education in Washington, D.C., as a Permanent Addition to their Children’s Art Collection

**Rosemead, CA, June 12, 2015:** The Rosemead School District would like to congratulate 2<sup>nd</sup> grade student artist Miss Isabella Lemos for having her artwork “Ugly Looking Mustache” chosen, honored and displayed at the Department of Education in Washington, DC, as a permanent addition to their Children’s Art Collection.

Emma W. Shuey Elementary School student, **Isabella Lemos**, had her personal artwork selected by Crayola LLC to become part of the U.S. Department of Education’s permanent collection. In response to Crayola’s annual Art Expo, teacher Mrs. Lisa Elkins submitted Isabella’s work, which became one of 50 students’ work selected from across the country in 2015. This young artist will be able to find her framed art displayed at the U.S. Department of Education’s national office in Washington, D.C. or in one of the 49 regional offices around the nation.



Crayola honored each of the 50 student artists with a personalized plaque featuring their original art. To acknowledge their contribution and celebrate their creative expression, each student and teacher received a sampling of Crayola art supplies. Crayola and Rosemead School District agree Isabella is truly an inspiration to fellow student artists.

All submittals needed to meet the following criteria: Original artwork must be 2-D art, not to exceed 16” x 20”, no name should be visible on the artwork, submittal of a jpg (picture) for evaluation on the basis of visual appeal/aesthetics, originality, age appropriateness and craftsmanship.

In addition to honoring the child’s artwork by display at the U.S. Department of Education in D.C. (or in one of their regional offices across the country), Crayola will also send a plaque commemorating the piece with identification (name, grade, school), and a gift pack of worth \$350 of Crayola materials; sent to the school for presentation to Isabella. The teacher will also receive Crayola products for his/her participation.

**Rosemead School District Celebrates 2<sup>nd</sup> Grade Student Artist Isabella Lemos for her Artwork “Ugly Looking Mustache” being Honored at the Department of Education in Washington, D.C., as a Permanent Addition to their Children’s Art Collection**

For more information regarding the Rosemead School District programs please contact Assistant Superintendent, Educational Services Mr. John Lovato at (626) 312-2900 x213 or email [jlovato@rosemead.k12.ca.us](mailto:jlovato@rosemead.k12.ca.us). The Rosemead School District offers programs as follows and are not limited to: English Language Development (ELD); Instrumental Music program (4<sup>th</sup>-8<sup>th</sup> grades); Student in Need program; State Preschool; Transitional Kindergarten; Full Day Kindergarten; Before and Afterschool programs: K.S.A.R.T. (Kinder After School Recreational and Tutorial), A.S.A.R.T. (After School Recreational and Tutorial), A.S.E.S. (After School Education and Safety) program; Migrant Education Program; Gifted and Talented Program (GATE); Science Olympiad; Franklin Covey’s Leader in Me® Program and 7-Habits©; Positive Behavior Intervention and Supports (PBIS); gramMARCH Challenge; and Special Education Programs.

For information regarding the County of Los Angeles, Board of Supervisors please contact them directly at (213) 974-1411 or visit their website [www.bos.co.la.ca.us](http://www.bos.co.la.ca.us).

####

The Rosemead School District (RSD) is a Local Education Agency led by Superintendent Dr. Amy Enomoto-Perez. For more information, please visit [www.rosemead.k12.ca.us](http://www.rosemead.k12.ca.us) or contact the Superintendent’s office at (626) 312-2900 x212. Follow Superintendent Enomoto-Perez on Twitter @rosemeadsupt.